

Autism doesn't have to be puzzling

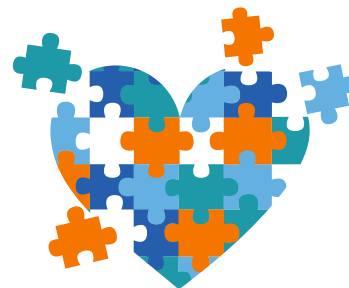
We'll help you figure it out



The Autism Spectrum Disorders (ASD) program — here for your family

When your child falls somewhere on the Autism Spectrum, you've got a team in your corner, ready to help. Our Autism Spectrum Disorders (ASD) program is here for your whole family, creating a strong care system. We'll help you:

- Strengthen the family unit and make it easier to understand how to use available care.
- Guide your whole family through the health care system.
- Use your benefits effectively to get the best outcomes.



What the ASD program can do for you

Community resources and family support

The ASD program team helps:

- Connect you to the resources and knowledge that build a strong foundation of care.
- Tailor referrals and education to meet your family's needs.
- Give you and your family ongoing support so you can overcome obstacles and add new services.
- Make it easier to reach your family's lifestyle and health goals.

Coordinated care

ASD case managers help you:

- Navigate the complex health care system.
- Address unique challenges of your situation.
- Build a custom care plan for your child.
- Find available services and connect you to any missing care.
- Link your child's treatment providers together for better collaboration.

Clinical review of Applied Behavior Analysis

We'll help tackle the tough stuff:

- A highly trained team of clinicians, experienced with families touched by ASD, works hard to make sure your child gets the right care from the right provider at the right time.



We can help

Call the ASD program team at 1-844-269-0538.

Anthem Blue Cross and Blue Shield is the trade name of: In Colorado: Rocky Mountain Hospital and Medical Service, Inc. HMO products underwritten by HMO Colorado, Inc. Copies of Colorado network access plans are available on request from member services or can be obtained by going to anthem.com/co/networkaccess. In Connecticut: Anthem Health Plans, Inc. In Georgia: Blue Cross Blue Shield Healthcare Plan of Georgia, Inc. In Indiana: Anthem Insurance Companies, Inc. In Kentucky: Anthem Health Plans of Kentucky, Inc. In Maine: Anthem Health Plans of Maine, Inc. In Missouri (excluding 30 counties in the Kansas City area): RightCHOICE® Managed Care, Inc. (RIT), Healthy Alliance® Life Insurance Company (HALIC), and HMO Missouri, Inc. RIT and certain affiliates administer non-HMO benefits underwritten by HALIC and HMO benefits underwritten by HMO Missouri, Inc. RIT and certain affiliates only provide administrative services for self-funded plans and do not underwrite benefits. In Nevada: Rocky Mountain Hospital and Medical Service, Inc. HMO products underwritten by HMO Colorado, Inc., dba HMO Nevada. In New Hampshire: Anthem Health Plans of New Hampshire, Inc. HMO plans are administered by Anthem Health Plans of New Hampshire, Inc. and underwritten by Matthew Thornton Health Plan, Inc. In Ohio: Community Insurance Company. In Virginia: Anthem Health Plans of Virginia, Inc. trades as Anthem Blue Cross and Blue Shield in Virginia, and its service area is all of Virginia except for the City of Fairfax, the Town of Vienna, and the area east of State Route 123. In Wisconsin: Blue Cross Blue Shield of Wisconsin (BCBSWI), underwrites or administers PPO and indemnity policies and underwrites the out of network benefits in POS policies offered by CompCare Health Services Insurance Corporation (CompCare) or Wisconsin Collaborative Insurance Corporation (WCIC). CompCare underwrites or administers HMO or POS policies; WCIC underwrites or administers Well Priority HMO or POS policies. Independent licensees of the Blue Cross and Blue Shield Association. ANTHEM is a registered trademark of Anthem Insurance Companies, Inc.